



Interlock Switch

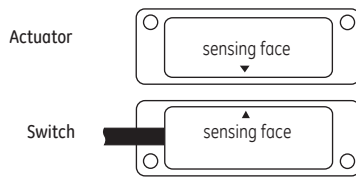
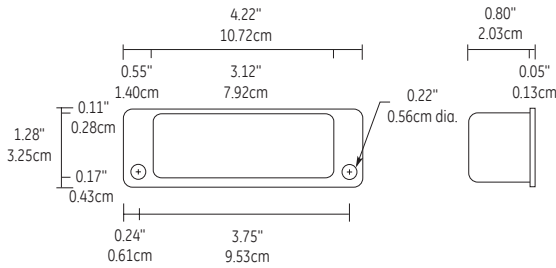
391 & 393 GuardSwitch

Applications

- USDA Approved Housing
- Food Processing Machines
- Rugged, Seamless SS Housing
- Requiring Highly Defeat Resistant Switches
- Wash-down and Corrosive Environments

General Specifications

Enclosure	304 Seamless Stainless Steel
Temperature Range	-40°F to 180°F (-40°C to 80°C)
Environmental	Hermetically Sealed Contact Switch Encapsulated in Polyurethane
Response Time	1 msec (5.4VA); 10 msec (150VA)
NEMA Rating	1, 2, 3, 4, 4X, 5, 6, 12, 12X
Protection Class	IP 67
Life Cycles	100,000 Under Full Load; Up to 200,000,000 Under Dry Circuit
Lead Types/O.D.	SJTOW (K)/18/2, 0.30" (0.76cm)
UL/CSA	All Models



Order Info. Electrical Specifications

Part No. ¹	Contact ² Config.	Load Rating		Switching Voltage, Max.		Switching Current, Max.		Contact Resistance	Sense Range ³		Break Range	Lead Length
		AC	DC	AC	DC	AC	DC		Max.	Min.		
391-CT-06K	N.O.	2.5VA	2.5W	30V(@0.08A)	30V(@0.08A)	0.18A(@13.8V)	0.18A(@13.8V)	0.5 Ohms	0.8"(2cm)	0.1"(0.25cm)	1.2"(3.0cm)	6' (1.8m)
391-CT-12K (3.6m)	N.O.	2.5VA	2.5W	30V(@0.18A)	30V(@0.18A)	0.18A(@13.8V)	0.18A(@13.8V)	0.5 Ohms	0.8"(2cm)	0.1"(0.25cm)	1.2"(3.0cm)	12'
391-DT-06K ³	N.O.	150VA	NA	120V @1.25A	NA	1.25A(@120V ⁴)	NA	NA	0.8"(2cm)	0.1"(0.25cm)	1.2"(3.0cm)	6' (1.8m)
391-DT-12K ³ (3.6m)	N.O.	150VA	NA	120V @1.25A	NA	1.25A(@120V ⁴)	NA	NA	0.8"(2cm)	0.1"(0.25cm)	1.2"(3.0cm)	12'
393-DT-06K ³	N.O.	150VA	NA	120V @1.25A	NA	1.25A(@120V ⁴)	NA	NA	0.8"(2cm)	0.1"(0.25cm)	1.2"(3.0cm)	6' (1.8m)
393-DT-12K ³ (3.6m)	N.O.	150VA	NA	120V @1.25A	NA	1.25A(@120V ⁴)	NA	NA	0.8"(2cm)	0.1"(0.25cm)	1.2"(3.0cm)	12'

Warning— Each electrical rating is an individual maximum and cannot be exceeded!

¹ The part number 391 and the 393 are the same in all respects except the cable exits 391 left and 393 right.

² Configuration with actuator away from the switch

³ Proximity of ferrous materials usually reduces sense range — typically by 50%. The shape and type of material cause a wide diversity of effects.

INTERLOCK SWITCH
300 SERIES

